

Letters to the Editor

The 1890 Guildhall Exhibition

Dear David

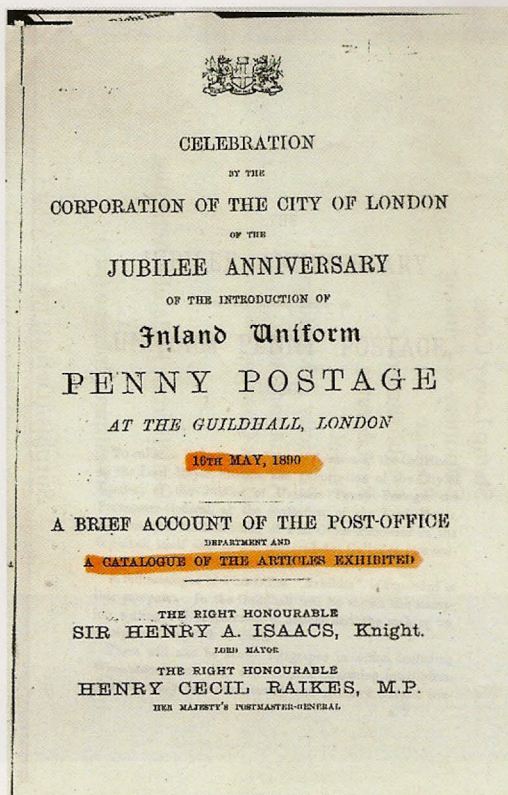
Although it may be a case of David tilting at Goliath I feel I cannot pass unchallenged the provocative statement of my fellow and much more learned member of our Society, Glenn Morgan, at page 108 of the excellent Centenary edition to the effect that the first stamp exhibition souvenirs were produced for the 1890 London Philatelic Exhibition held between 19 and 26 May in Baker Street, London.

I enclose specimen photocopy pages of the Catalogue for an Exhibition sponsored by the Corporation of the City of London to celebrate the 50th Anniversary of the introduction of the uniform inland penny postage which took place at the Guildhall between 16 and 19 May 1890. A special postcard was issued for the Exhibition which sold out within three hours of the opening of the event. A colour photocopy of a reproduction is enclosed which was produced for Stamp World London 90.

In addition, many standard halfpenny postcards were purchased at the three post offices set up at the Exhibition representing 1790, 1890 and a forecast of a 1990 post office which, remarkably, predicted email and mobile phone communication although it labelled them "Electrotubular Lightning Express" and "Electrophonoscope" respectively. A special "Penny Postage Jubilee 1840 - 1890 16 May 90 Guildhall" handstamp was available and have a card in my collection bearing this souvenir of the Exhibition which definitely predated the London Philatelic Exhibition.

A souvenir envelope and card were issued for a Conversazione staged at the South Kensington Museum (now the Victoria and Albert) on 2 July 1890 organised by the GPO under royal patronage to further celebrate the Penny Postage Jubilee. Both these major exhibitions are omitted from the *British Stamp Exhibitions* catalogue now on CD written by Glenn and his co-author Graham Wilson and I implore them to include them in future editions. They are fully documented at the BPMA.

Yours sincerely, David Sherman



Glenn points out that David is correct that the above is earlier than the one mentioned in his piece, but that the article was about *philatelic exhibitions*, whereas the Guildhall Conversazione events celebrated inland uniform penny postage and were not hobby-related shows. These items are excluded from the British Stamp Exhibitions CD not just because the 1890 events were not stamp shows, but also because postcards and envelopes are intentionally outside of the scope of the catalogue.

There is no present intention to expand the coverage of the CD in any future edition, although collectors will be aware that the Stamp World 1990 reproductions are listed because they are within the criteria for inclusion, being printed on thin card without a postcard back.

Editor.

GORDON BASS

I will be attending the following stamp fairs with my extensive range of

Colonial Stamps QV- KGV
AUSTRALIA & STATES B.E.A CANADA
CYPRUS FALKLAND IS GAMBIA GIBRALTAR
MALTA NEW ZEALAND RHODESIA
THE SAINTS ZANZIBAR and ZULULAND

NOVEMBER

- 1 Beckenham Azela Hall, Croydon Road
- 9 Chelmsford Chelmsfordians Social Club, Roxwell Road
- 15 Brighton Good Shepherd Hall, 272 Dyke Road
- 29 Twickenham Methodist Church Hall, Percy Road, Whitton

DECEMBER

- 6 Beckenham Azela Hall, Croydon Road
- 7 Potters Bar Mount Grace School, Church Road
- 13 Bexhill St Marthus Church Hall, Cooden Sea Road, Little Common Sea Road (B2182)
- 14 Chelmsford Chelmsfordians Social Club, Roxwell Road
- 20 Brighton Good Shepherd Hall, 272 Dyke Road

If you wish to see any specific stock at any of the above events please ring in advance any evening before 10 pm. Your wants lists invited

Postal address PO Box 481 Tonbridge TN9 9FU
 email: gbass571@btinternet.com

Tel 01892 832897 FAX 01892 832149

